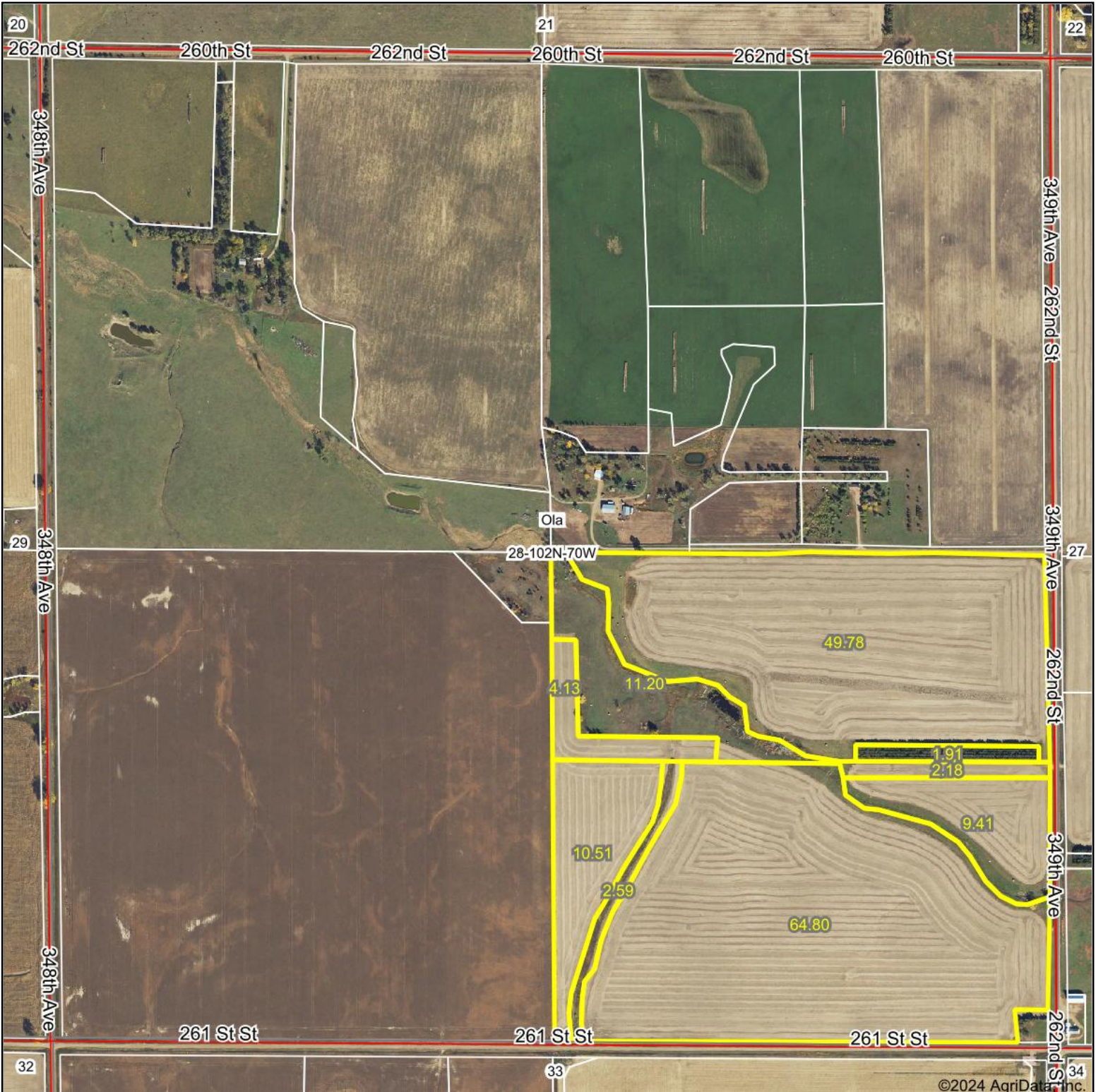
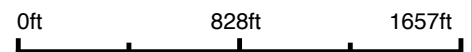


# Aerial Map



Boundary Center: 43° 36' 14.84, -99° 12' 58.92



**28-102N-70W**  
**Brule County**  
**South Dakota**



Maps Provided By:

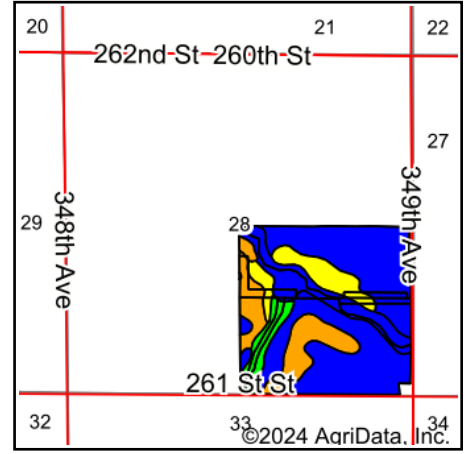
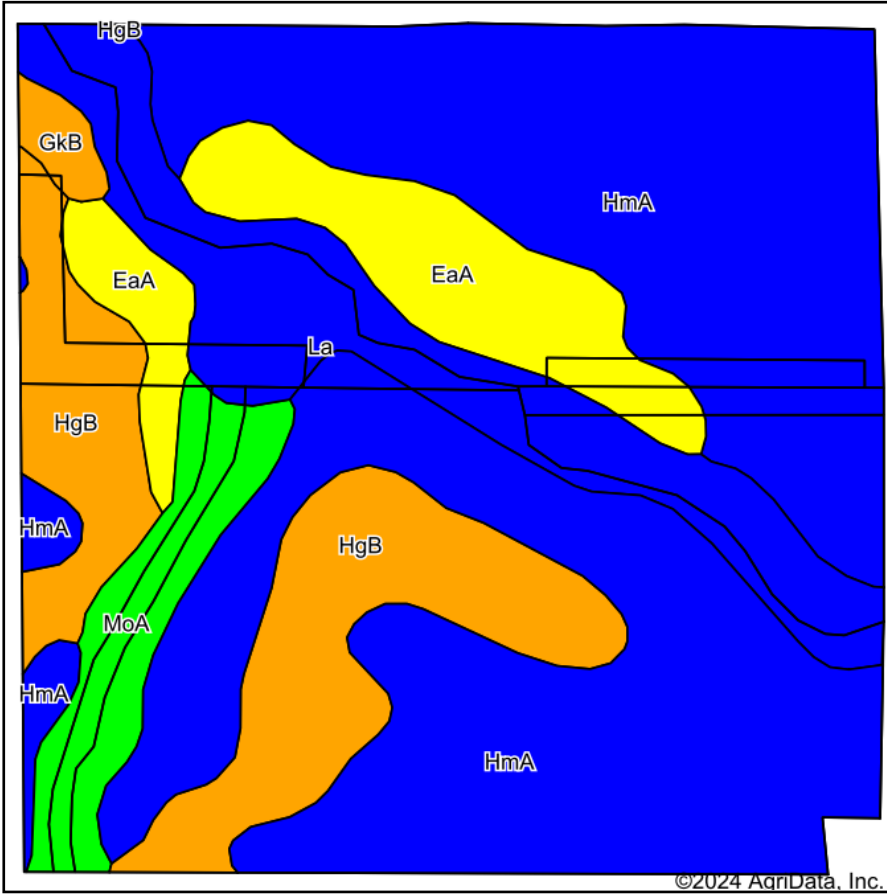


© AgriData, Inc. 2023 www.AgriDataInc.com

5/1/2024

Field borders provided by Farm Service Agency as of 5/21/2008.

# Soils Map









State: **South Dakota**  
 County: **Brule**  
 Location: **28-102N-70W**  
 Township: **Ola**  
 Acres: **156.51**  
 Date: **5/1/2024**

Maps Provided By:  
  
 CUSTOMIZED ONLINE MAPPING  
 © AgriData, Inc. 2023 www.AgriDataInc.com



Soils data provided by USDA and NRCS.

Area Symbol: SD603, Soil Area Version: 27

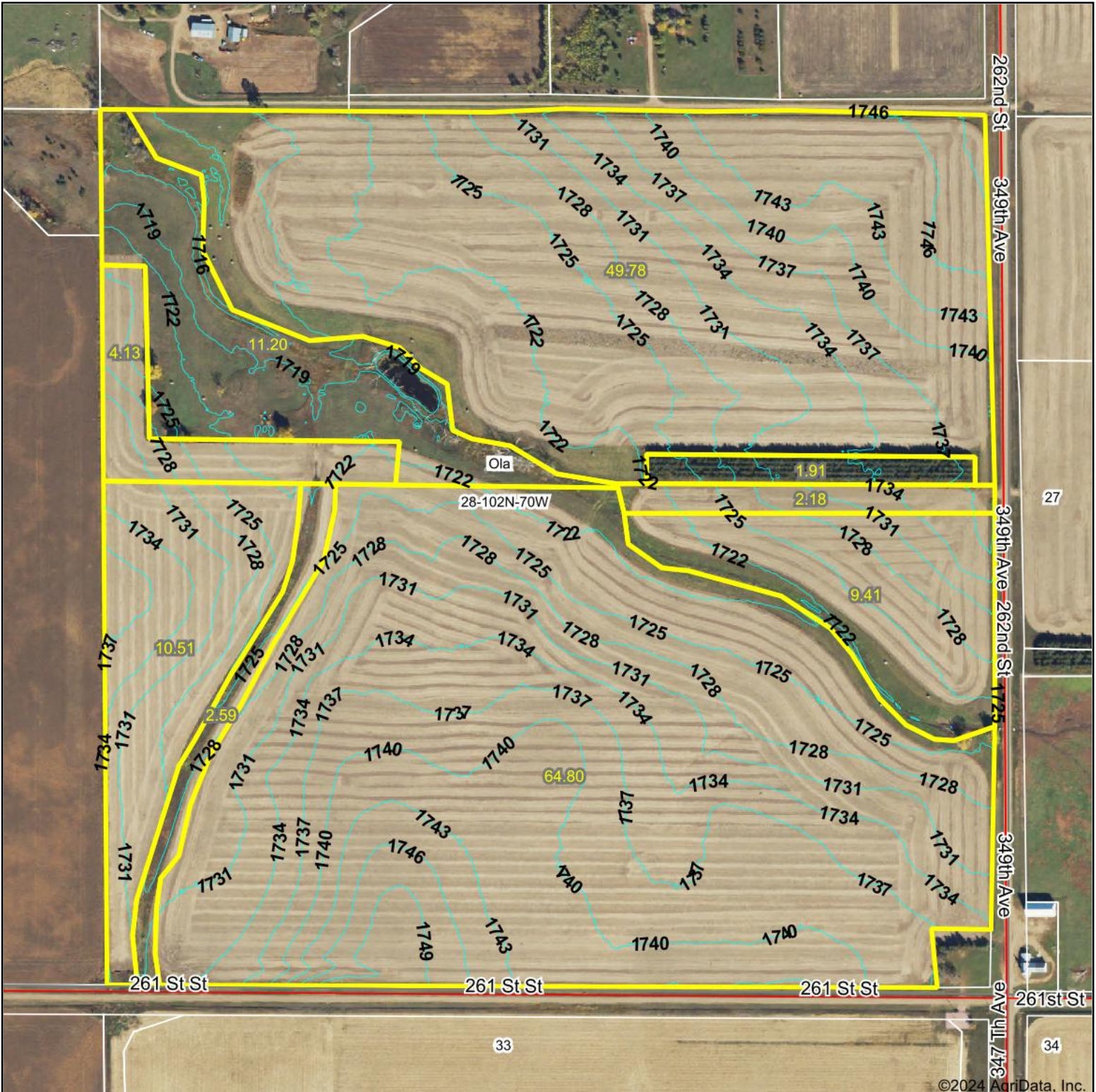
Code	Soil Description	Acres	Percent of field	PI Legend	Non-Irr Class *c	Productivity Index	Alfalfa hay Tons	Bromegrass alfalfa AUM	Corn Bu	Grain sorghum Bu	Oats Bu	Spring wheat Bu	Winter wheat Bu	*n NCCPI Soybeans
HmA	Highmore-Mobridge silt loams, 0 to 4 percent slopes	87.55	55.9%		Ilc	87	2	3.3	51	55	61	25	35	57
HgB	Highmore-Java complex, 1 to 5 percent slopes	23.88	15.3%		Ile	76	2.7	4.5	53	57	61		33	51
La	Lane silty clay loam, 0 to 2 percent slopes, rarely flooded	19.62	12.5%		Ils	86								58
EaA	Eakin-DeGrey silt loams, 0 to 2 percent slopes	15.40	9.8%		Ilc	70								53
MoA	Mobridge silt loam, 0 to 2 percent slopes	8.58	5.5%		Ilc	94								60
GkB	Glenham-Java-Prosper loams, 1 to 6 percent slopes	1.48	0.9%		Ile	77								51
<b>Weighted Average</b>					<b>2.00</b>	<b>83.8</b>	<b>1.5</b>	<b>2.5</b>	<b>36.6</b>	<b>39.5</b>	<b>43.4</b>	<b>14</b>	<b>24.6</b>	<b>*n 55.9</b>

\*n: The aggregation method is "Weighted Average using all components"

\*c: Using Capabilities Class Dominant Condition Aggregation Method

Soils data provided by USDA and NRCS.

# Topography Contours



Source: USGS 1 meter dem

Interval(ft): 3.0

Min: 1,713.7

Max: 1,751.2

Range: 37.5

Average: 1,730.8

Standard Deviation: 8.23 ft

0ft 462ft 924ft



5/1/2024

**28-102N-70W**  
**Brule County**  
**South Dakota**

Boundary Center: 43° 36' 14.84, -99° 12' 58.92

Maps Provided By:

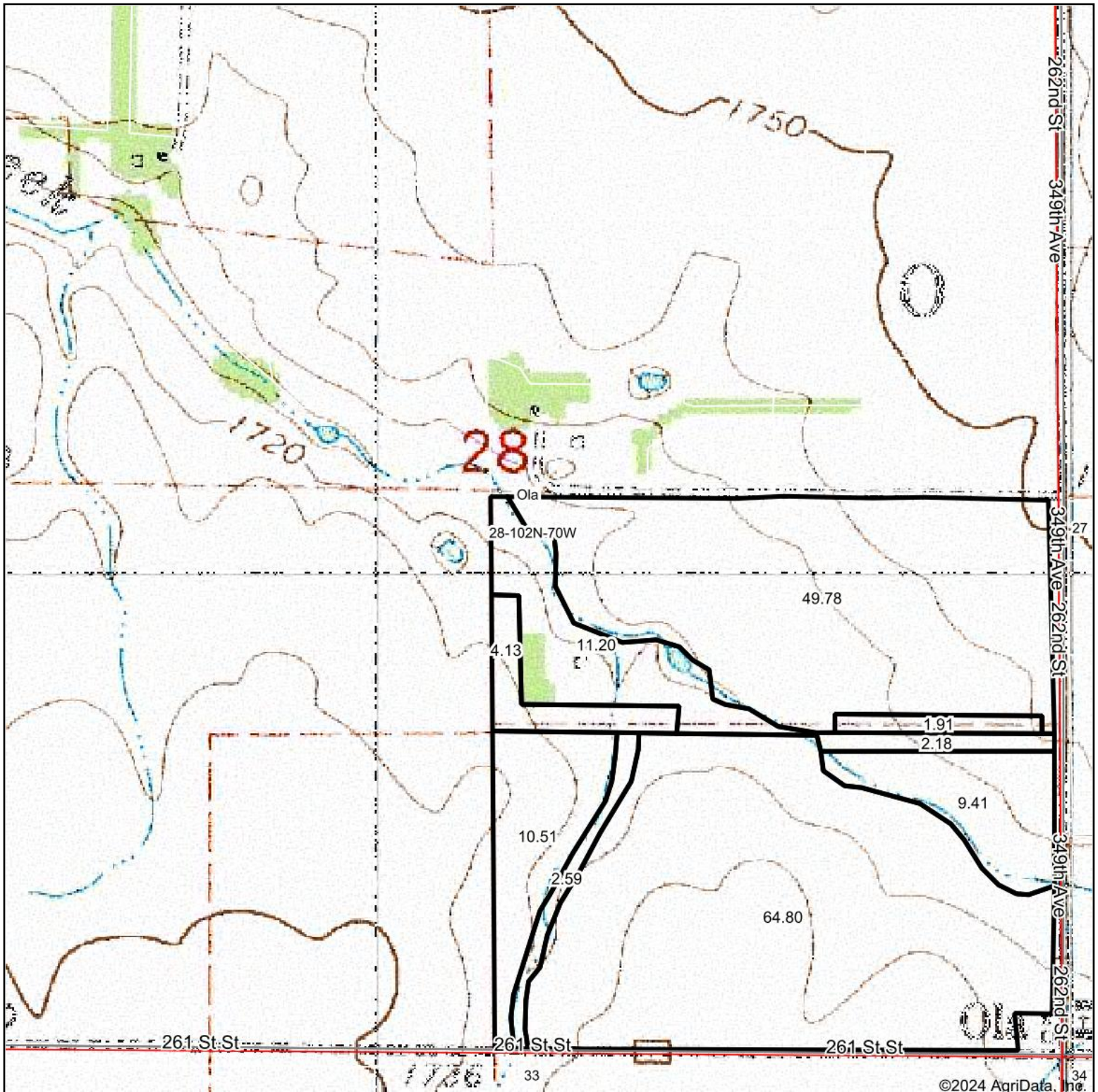


© AgriData, Inc. 2023 www.AgriDataInc.com

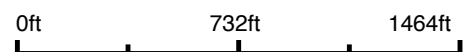
Field borders provided by Farm Service Agency as of 5/21/2008.

©2024 AgriData, Inc.

# Topography Map



Map Center: 43° 36' 25.26, -99° 13' 13.28



**28-102N-70W**  
**Brule County**  
**South Dakota**



Maps Provided By:  
  
CUSTOMIZED ONLINE MAPPING  
© AgriData, Inc. 2023      www.AgriDataInc.com